



**INSTALLATION INSTRUCTIONS
HONDA TALON
TINTED LOWER DOOR INSERTS
PART # 55-2800**

IMPORTANT NOTICES

READ AND UNDERSTAND THESE INSTRUCTIONS COMPLETELY BEFORE INSTALLATION TO AVOID INJURY TO YOURSELF, DAMAGE TO THE VEHICLE OR ACCESSORY.

- For proper installation, **TWO** people are required.
- Torque specifications must be followed when tightening bolts. Over-tightening any and/or all screws will cause cracks around mounting holes which is not covered by any warranty.
 - As specified on carton label, once protective film on shields is removed, product cannot be returned.
- As specified on carton label, damage caused by packaging staples is not covered by warranty. All staples must be removed prior to removing product from carton.
- Failure to follow these installation instructions completely may void any warrantable components and result in product damage or personal injury.
- Do not use Loctite or any other similar fastener adhesive. These types of products react to plastics and cause cracking. Not covered by any warranty.
- The application of improper cleaners, abrasive and/or dirty cleaning towels can severely damage the product. Failure to follow cleaning recommendation (provided herewith) may void any warrantable components.

DEALER

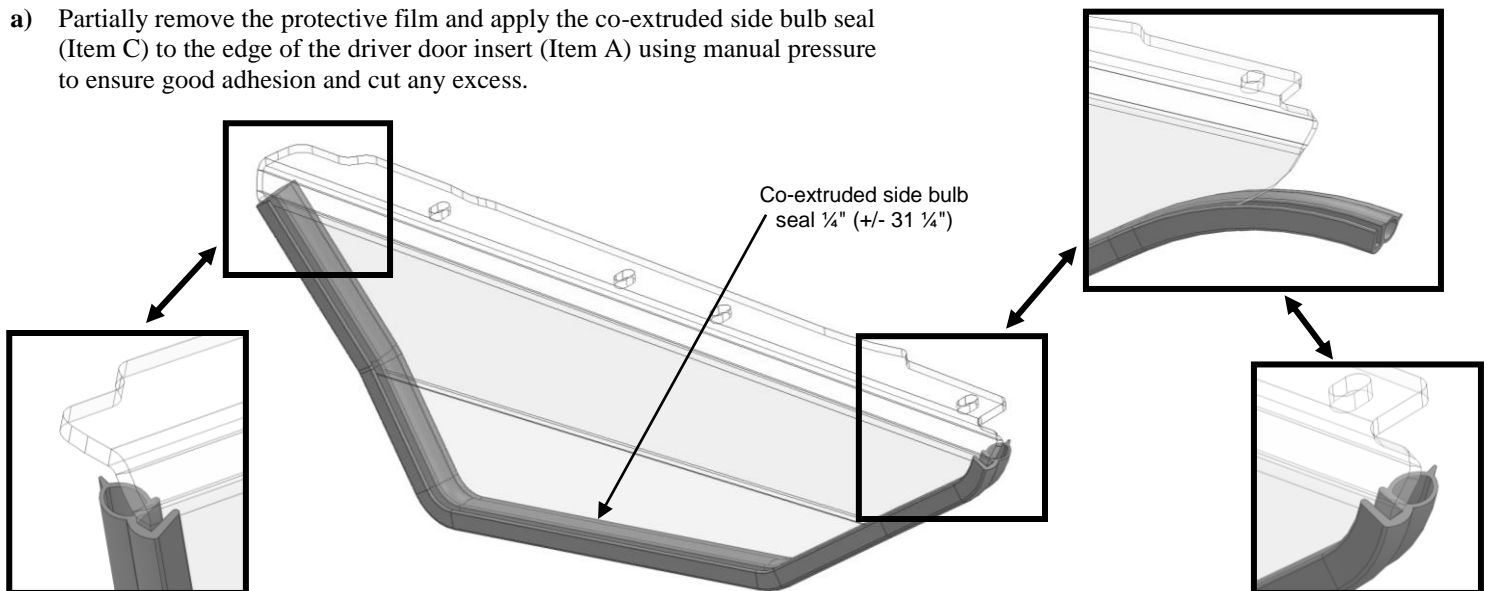
These instructions contain important information for future reference and must be given to the customer at time of purchase or upon completion of installation.

Parts List (parts available with kit only and not available separately)

ITEM	PART NAME	DESCRIPTION	QTY
A	Driver side door insert	CNC cut-out made of 1/4" thick GE tinted polycarbonate or equivalent	1
B	Passenger side door insert	CNC cut-out made of 1/4" thick GE tinted polycarbonate or equivalent	1
C	Co-extruded SIDE bulb seal (1/4")	Includes: 66" Co-extruded SIDE bulb seal (1/4") / #77-95BS-SIDE [end user to cut to exact length]	1
INSTRUCTION BAG	D	Mounting hardware Includes: 8 philips truss screws M6 x 24, 8 plastic shoulder washers M6, 8 washers M6 x 25 and 8 flanged locknut M6	1

1. Driver side door insert installation

- a) Partially remove the protective film and apply the co-extruded side bulb seal (Item C) to the edge of the driver door insert (Item A) using manual pressure to ensure good adhesion and cut any excess.

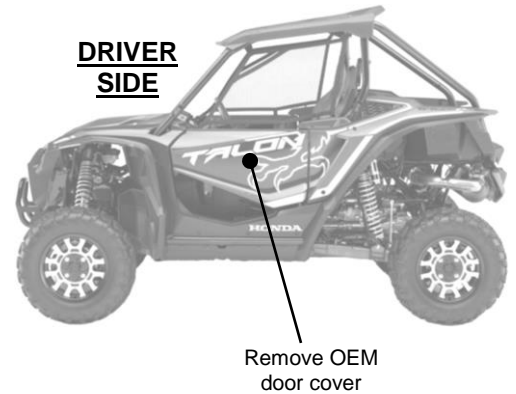
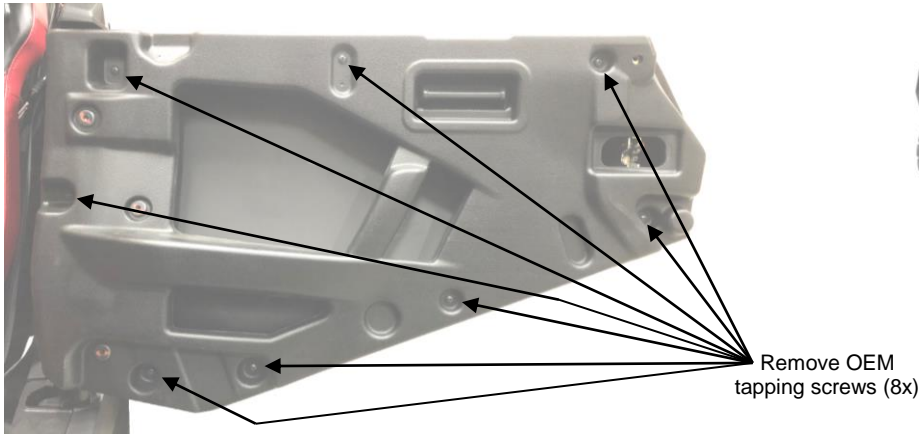


IMPORTANT NOTICES

Torque specifications must be followed when tightening bolts.

Over-tightening any and/or all screws will cause cracks around mounting holes which is not covered by any warranty.

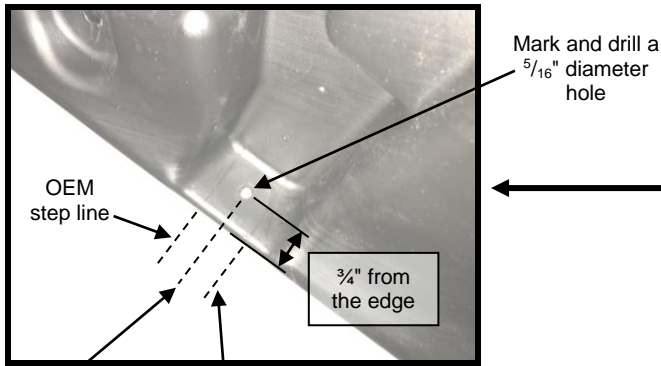
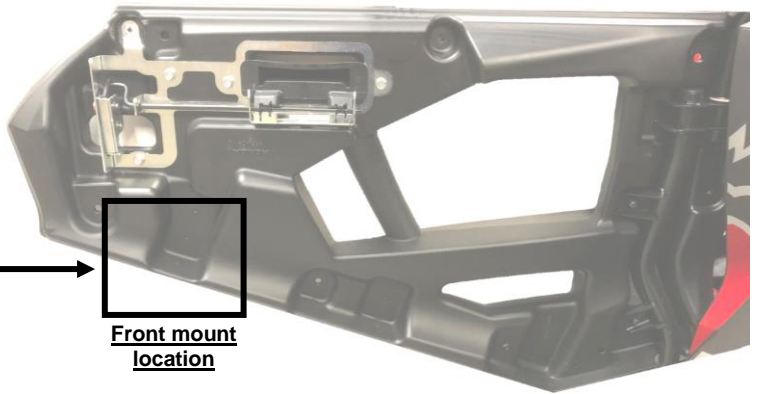
- b) Temporarily remove the OEM door cover from the door panel by removing the OEM tapping screws (8x) as shown by the arrows below. Those components will be reinstalled later.



- c) At the front mount location shown below, use the OEM step lines as guides and mark the first mounting hole at $\frac{3}{4}$ " from the edge of the OEM door panel. Drill a $\frac{5}{16}$ " diameter hole (front mount location only) in the OEM door panel and install the driver lower door insert using supplied hardware. Adjust the position of the driver lower door insert and tighten.

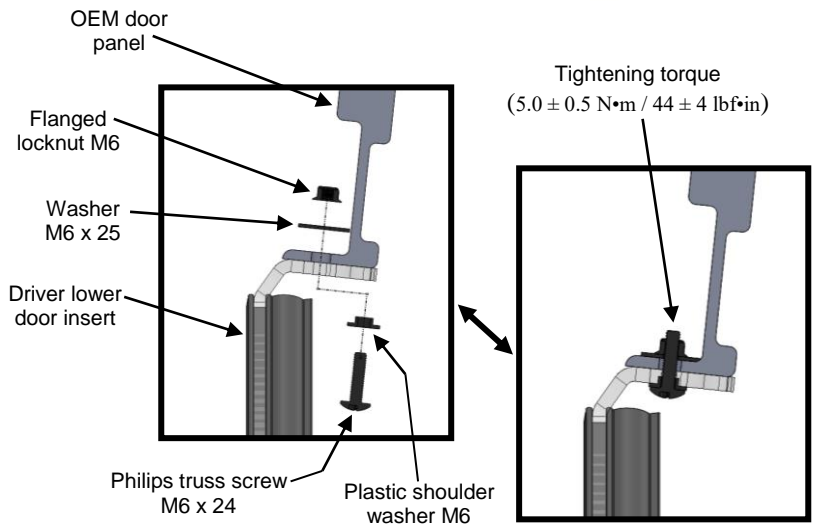
IMPORTANT NOTICES

For following steps c) & d), we strongly recommend the assistance of a second person to keep components in place during drilling and assembling process.



Center of OEM step lines

OEM step line

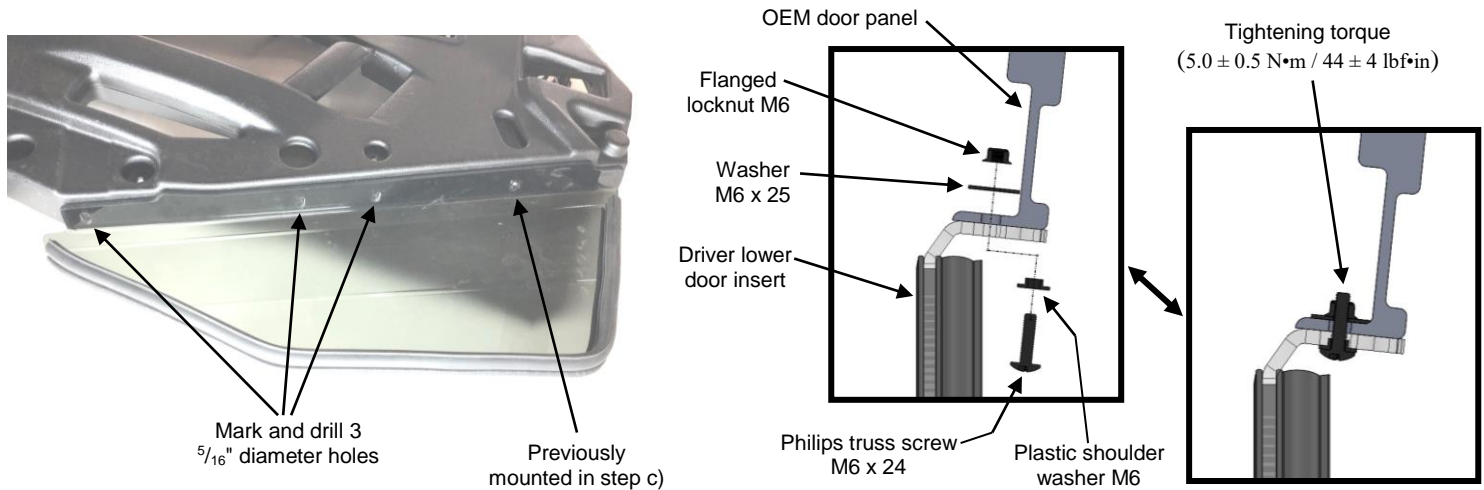


IMPORTANT NOTICES

Torque specifications must be followed when tightening bolts.

Over-tightening any and/or all screws will cause cracks around mounting holes which is not covered by any warranty.

- d) Use the remaining driver lower door insert mounting holes as guide to mark and drill 3 more $\frac{5}{16}$ " diameter holes in the OEM door panel and secure with supplied hardware



- e) Repeat Step a) to d) for passenger side installation.

2. Maintenance and Care

Tighten all hardware after first use and periodically thereafter.

CLEANING:

- Rinse with lukewarm water; wash gently with mild soap or detergent and lukewarm water, using a soft cloth or sponge. **DO NOT SCRUB** or use brushes or squeegees.
 - Rinse again. Dry with soft cloth or moist cellulose sponge to prevent water spotting.
- To remove wet paint, glazing compound or grease, rub lightly with a good grade of VM&P naphtha or isopropyl alcohol, then wash and rinse. **DO NOT USE GASOLINE.**

NOTICE: Abusive cleaning procedures by hand washing or automated washing equipment will eventually result in visual hazing, loss of light transmission and coating delamination.

Compatible Cleaning Agents

- Aqueous Solution of Soaps and Detergents

----- Joy ----- Freon T.F. ----- Palmolive liquid ----- Top Job ----- VM&P grade Naphtha ----- Windex (with ammonia D) -----

MINIMIZING HAIRLINE SCRATCHES

For minimizing scratches and minor abrasions, mild automobile polish can be used.

Recommended products: Johnson Paste Wax, Novus Plastic Polish #1 and #2, Mirror Glaze plastic polish and Plexux1.

Testing polish on a separate Lexan sample is recommended. Be sure to follow product instructions carefully.